

The GWC Newsletter



Welcome to the George Wiley Center Newsletter

This summer, we're bringing back the newsletter. Take a look at what's been happening at the George Wiley Center lately.



ABOVE: Summer interns Claire and Cyntia facilitating a community organizing workshop

BELOW: GWC collaboration with Progreso Latino helped to amplify our combined efforts



RI residents rallying for a Percentage of Income Payment Plan at the statehouse



We continue to work to pass PIPP (read more about this bill on page 5) and we need your help. Contact your legislator to ask them to pass PIPP using this qr code!



Announcements and Recent Victories



Thanks to ongoing supporters



Fair Notice Act is now law

Thanks to legislative leader Rep. Jennifer Stewart, Rhode Island General Laws now mandates landlords to provide a written 60-day notice for rent increases for residential tenancy (excludes independent living, assisted living or congregate care facilities) and a written 120-day notice for tenants over the age of 62, before raising the rent.

Protecting the medically vulnerable

Thank you to Dr. Nithin Paul, M.D. for helping to enroll George Wiley Center members in utility protections. Contact us to help us win stronger medical protections.



Extension of Utility Shutoff Moratorium until May 1st is now law

The GWC organized to win a "winter moratorium" to protect people from utility shut-offs.

For years the GWC has petitioned the RI PUC to extend the moratorium on utility shut-offs to May 1st. Rep David Morales helped us institutionalize this Victory into state law. We are grateful for Rep Morales efforts.

Additionally Rep. Morales provided leadership on efforts toward medical debt relief that we appreciated.



Anti-Eviction Clinics Success

Thank you to Rep. Cherie Cruz for helping us obtain a grant from the RI House of Representatives and partnering with us and Progreso Latino and RILS to host our monthly anti-eviction clinics.



Sponsoring Serious Illness Protection

Thank you to Sen. Meghan Kallman and Rep. Cherie Cruz for being lead sponsors of our bill to strengthen utility protections for RI residents with medical conditions. Get involved in helping us organize for this disability justice issue.



Read more about our proposed bill for strengthening utility protections for the medically vulnerable on page 5.



Contact your legislators to encourage them to pass this bill using this qr code

Upcoming GWC Events and Meetings



Weekly Wednesday Meeting

Suffering a utility crisis? Or simply interested in becoming more involved in the GWC? Attend our weekly meeting where we will discuss your utility rights and open the space for you to share your story, and find ways to organize together for more just policies in Rhode Island .

- Every Wednesday 6:30pm at 32 East Ave., Pawtucket

Events to attend in the community

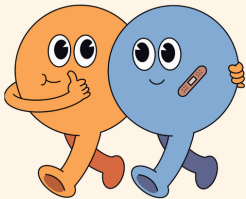
Roots2Empower Community Climate Conversation

Discuss state investments in resilience, green jobs, impacts of pollution, and your vision for the future. Dinner and stipends provided!

- Thursday, August 29 from 5:30-7 PM at the Pawtucket Library (13 Summer St)

ARE YOU FACING EVICTION?

Come meet with a lawyer who can help



Bring your eviction notice

ANTI-EVICTION CLINIC WED AUG 28TH AT 5:30 PM



32 East Ave Pawtucket | georgewileycenter.org | 401-728-5555

Anti-eviction clinic

Facing eviction? Bring your eviction notice to our clinic to speak with a lawyer who can help and work together to organize for housing security for all!

- Wednesday, August 28, 5:30pm

LIHEAP clinic

Do you need help applying for LIHEAP? Bring your necessary documents to the George Wiley Center to get help filing your application at our LIHEAP clinic and take action for affordable utilities.

- Wednesday, September 25, 6:00pm



Do you need help applying for LIHEAP?
The George Wiley Center is hosting a
LIHEAP clinic on
Wednesday, September 25th at 6:00PM
32 East Ave. Pawtucket, RI

Before coming to the clinic review the list and gather all the documents required to be prepared to file your application.

LIHEAP
Application Check List

Please do not mail or drop off your application unless you have included everything on this list.

✓ Did You Remember To...

- ☐ Sign the back of your application?
- ☐ Include documentation of the last four weeks of income for all members 18 and over?
- ☐ Include an Adult with No Income Form if an adult in your household does not have income?
- ☐ Include your most recent gas or deliverable fuel bill, along with your most recent electric bill?
- ☐ Include proof of residency such as a copy of your rental agreement or mortgage?
- ☐ Provide copies of Social Security cards for everyone in your household?
- ☐ Provide copies of photo identification for adults in your household who are 18 years or older?
- ☐ Provide copies of birth certificates for all children who are under 18 years old?

If you are missing any documents listed above your application cannot be processed. This will result in your application being mailed back to you.

Application process can take up to 60 days, your patience is appreciated.
Additional documents might be required.

RI LIHEAP Policy Manual Appendix 1 JULY 2023



During the heat waves this summer, the George Wiley Center was open as a Cooling & Organizing Center for residents without A/C.



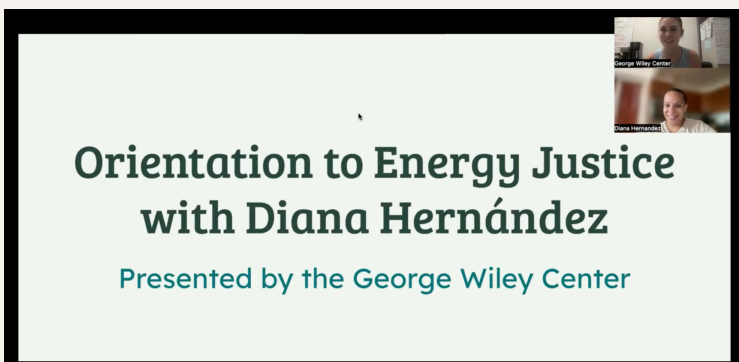
Organizer Daisy Paz representing the GWC at the RI Poor People's campaign.



Our Summer Organizing Series was a success! Four sessions taught participants about community organizing.



Weekly utility rights meetings and monthly anti-eviction clinics are ongoing at the George Wiley Center.



Diana Hernández, PhD, national expert on Energy Justice, joined us for the session of our series. Check out the video on the George Wiley Center's YouTube channel.



We continue to build our membership to fight for a Percentage Income Payment Plan for updates go to www.passpipp.org

What are we working on? Our Current Campaigns



Pass PIPP

Currently, Rhode Islanders living under the Federal Poverty line routinely spend a higher percentage of our income on utilities. Our campaign is called PIPP, or percentage income payment plan. A percentage income payment plan means that low-income households pay a fair percentage of our income forward utility bills. Our proposed PIPP for Rhode Island decreases the rate to 3-6 % of a household's income. The legislative session for this year is over, but we continue to work to gain momentum!

Strengthen Protections for the Seriously Ill

Utility terminations in any low-income household are stressful and traumatizing; utility terminations in medically vulnerable households are downright dangerous and inhumane. Our other primary current campaign is to fight for stronger protections against utility shutoffs in medically vulnerable households. Although consumers with medical conditions or disabilities can have a doctor fill out a medical protection form, currently utility companies don't always follow the advice of medical professionals. The passage of this bill would base the period of protection against shutoffs on medical professionals like they do in NH and CT.



August/September 2024

GWC in the News

Pay what you can for electricity and gas? Why RI advocates are pushing for such a plan

Alex Kuffner | Providence Journal | May 30, 2024

Rep. Morales bill codifying and expanding protections for consumers from energy shut-offs passes House

Woonsocket Radio | May 7, 2024

Check out some recent testimonies from RI residents on our social media



BECOME A SOLIDARITY SUSTAINER



**HELPING THOUSANDS
PREVENT UTILITY
TERMINATIONS**

**YOUR ONE TIME OR MONTHLY DONATION
WILL MAKE A DIFFERENCE!**

Unfortunately one of the major funders of the George Wiley Center has made the "difficult decision to delay any decisions concerning pending grant application for the 2024-2025 grant circle." This creates a hole in our budget of \$60-75,000, but with the help of individual one time donors and monthly sustainers, we will be able to respond to this crisis and become stronger for the long run.

**PLEASE HELP US WIN
BIGGER VICTORIES BY
MAKING MONTHLY
DONATIONS**

**CHOOSE YOUR ONE TIME DONATION
OR ONGOING SUSTAINER METHOD**

- ★ ZELLE & Paypoll:
georgewileycenterri@gmail.com
- ★ Network For Good (online donations):
<https://tinyurl.com/donategwcri>
- ★ Credit, debit or cash (in person)
Make checks payable to:
★ George Wiley Center
32 EAST AVE
PAWTUCKET, RI 02860

\$10 PRINTING 100 FLIERS

\$20 SENDING 250 TEXT MESSAGES

\$40 TRANSLATION OF A MEETING

**\$100 MOBILIZE FOR A MEETING,
HEARING OR ACTION**



Thank you!

VISIT OUR WEBSITE
georgewileycenter.org

CONTACT US
(401)-728-5555



General Election Voter Registration Deadline: 10/06/24
Mail Ballot Application Deadline: 10/15/24

To register online go to: <https://vote.sos.ri.gov>

To register by mail or in person, mail or bring your completed form to your local board of canvassers.

You can pick up a voter registration form for the general election at the George Wiley Center 32 East Ave., Pawtucket, RI 02860

Rhode Island allows same-day voter registration for presidential elections only. If you miss the voter registration deadline, you can register to vote on Election Day but you will only be able to vote for President and Vice President. You will not be able to vote in any state, local, or other federal races. You can only register and vote on Election Day at the location designated by your local board of canvassers.

Thank you to our partners & collaborators!

**SPEAK
OUT
AGAINST**

**UTILITY RATE
INCREASES**



**RHODE ISLAND ENERGY IS PROPOSING TO
INCREASE OUR RATES AGAIN**

**JOIN THE GEORGE WILEY CENTER AND ALLIES AT
2PM ON THURSDAY AUGUST 29TH AT RI ENERGY
280 MELROSE ST, PROVIDENCE, RI 02907**

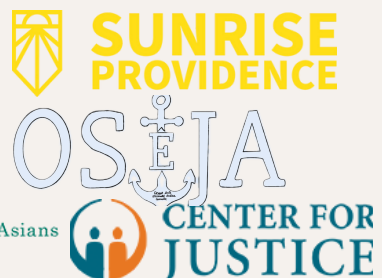
**IF YOU CAN'T JOIN US IN PERSON PLEASE EMAIL US
YOUR TESTIMONY FOR US TO READ OUT-LOAD ABOUT
WHY WE CAN'T AFFORD HIGHER RATES!**

ORGANIZE@GEORGEWILEYCENTER.ORG

**ARE YOU FACING UTILITY TERMINATIONS OR HAD YOUR UTILITIES
SHUT-OFF? PLEASE SHARE YOUR STORY ABOUT THE IMPACTS OF
UNAFFORDABLE UTILITIES AND WHY WE NEED MORE AFFORDABLE
RATES NOT MORE RATE HIKES!**



**SIERRA CLUB
RHODE ISLAND**



**Environment
Council of
Rhode Island**



**Nature's Trust
Rhode Island**



TEAMSTERS LOCAL 251



First Unitarian Church of Providence
A safe harbor that welcomes liberal religious seekers.



George Wiley Center

32 East Avenue

Pawtucket, RI 02860

georgewileycenter.org

organize@georgewileycenter.org

401-728-5555

Return Service Requested

Contents:

Overview + PIPP organizing link.....1

Announcements, thank yous, + Serious Illness
Protection organizing link2

Upcoming Events.....3

What have we been up to?.....4

Current Campaigns.....5

Become a Solidarity Sustainer.....6

Partners + Speak Out & Voter Registration.....7

Contents + Volunteer.....8

Volunteer at the George Wiley Center

Are you Interested in becoming more involved?
Volunteer at the George Wiley Center! Volunteers gain experience with various community organizing approaches while working alongside experienced organizers. You will come away with the tools to affect real social change, to ensure that every Rhode Islander has access to the services they deserve.

To become a member go to:

tinyurl.com/gwcmember